

ECONOMIC ALLIANCE OF KANKAKEE COUNTY

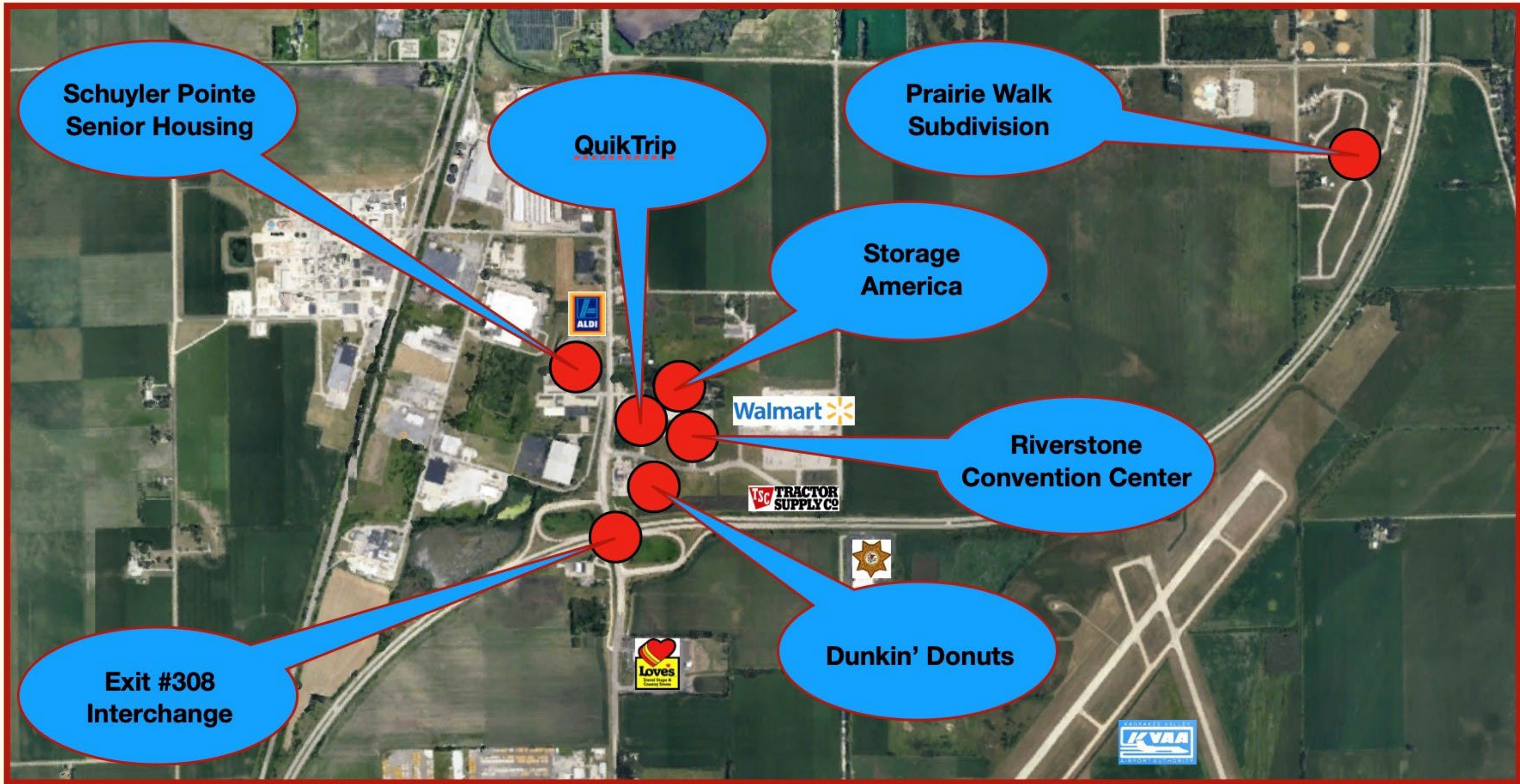
EXIT 308 PROJECT UPDATES
4/11/2024



GENERAL OVERVIEW

- ▷ DUNKIN' DONUTS
- ▷ QUIKTRIP
- ▷ CONVENTION CENTER
- ▷ STORAGE AMERICA
- ▷ SCHUYLER POINTE SENIOR HO
- ▷ EXIT 308 INTERCHANGE
- ▷ PRAIRIE WALK SUBDIVISION





DEVELOPMENTS

Project Notes:

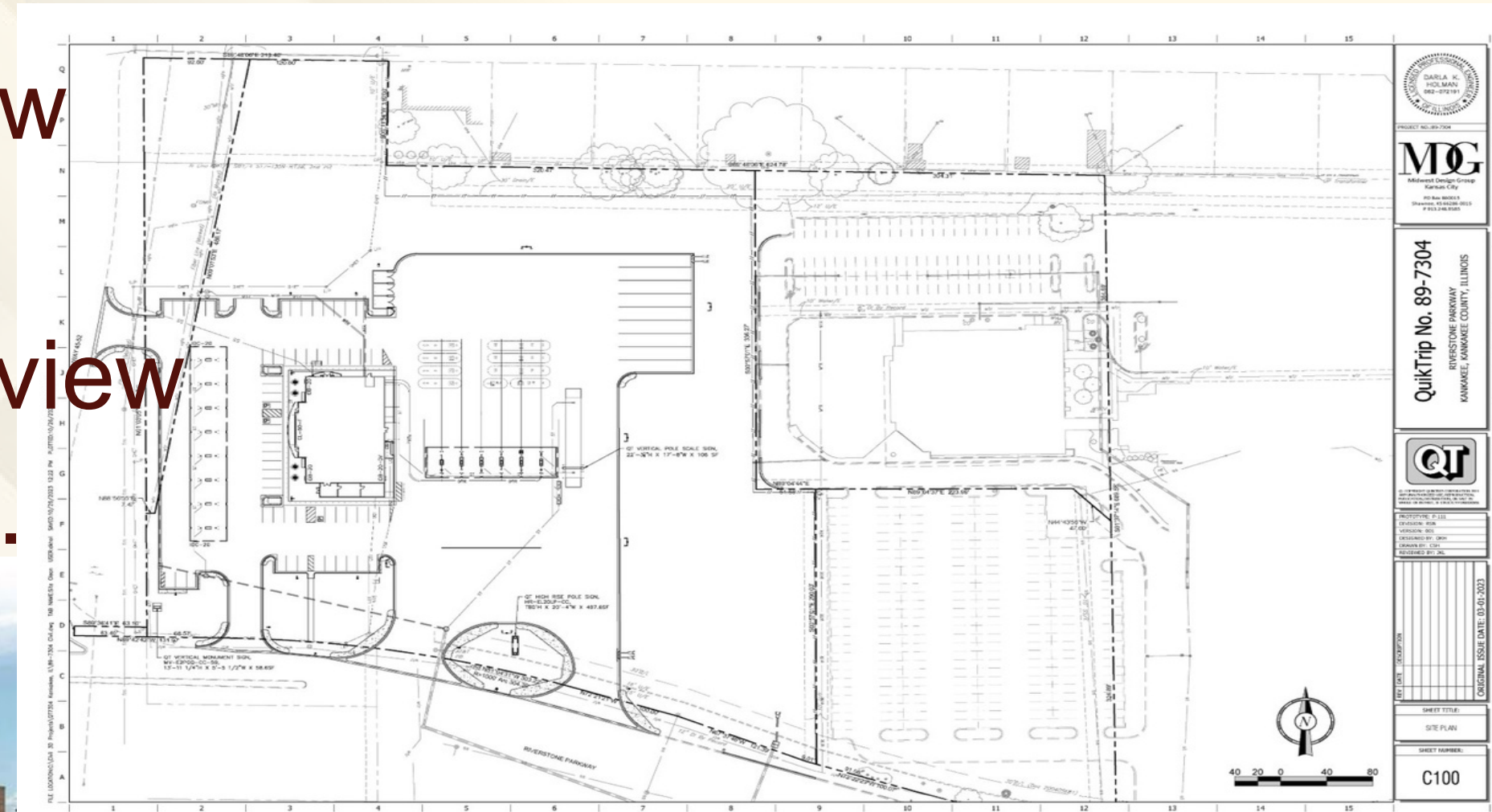
- New construction to create a stand alone site to meet sales de
- Opened 12/08/2023



QUIKTRIP

Project Notes

- 9 parcels of land are now back on the tax rolls
- Project is in planning review and site review process.



Project Notes:

- Part of QT negotiations was for the City to take ownership
- City will invest TIF funds into the renovations of the building
- City will be looking for an operator to eventually “run” the Center

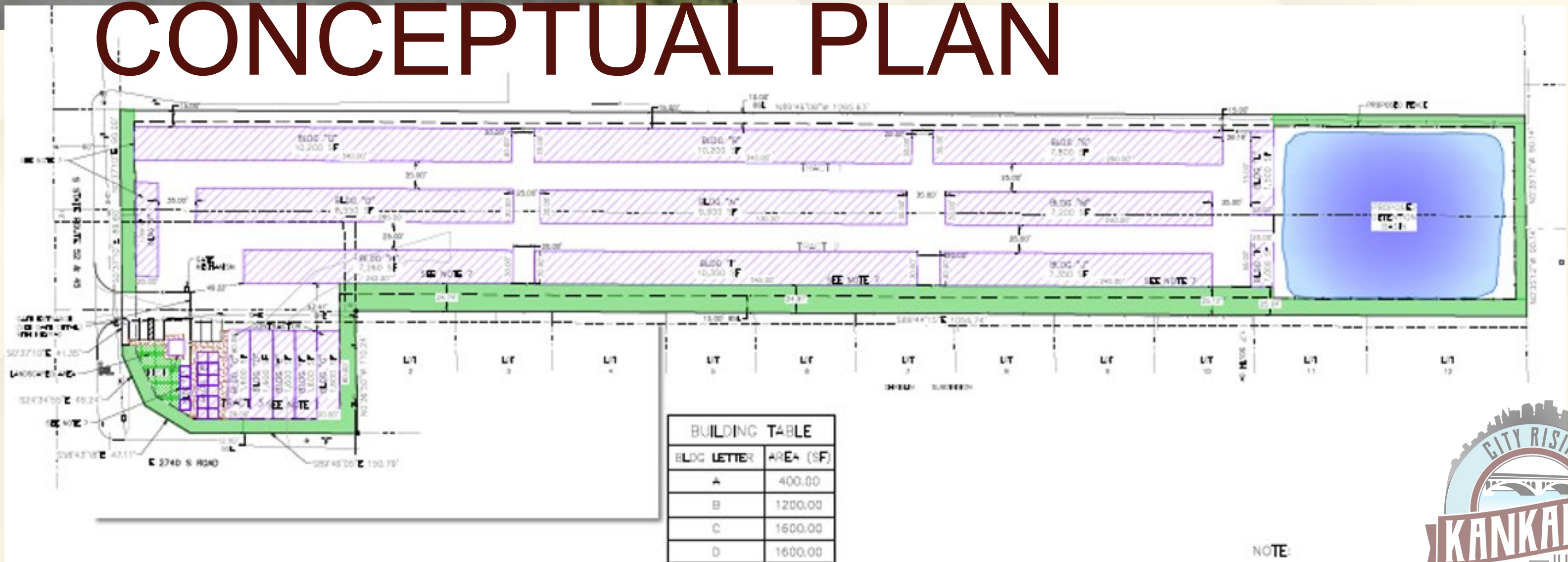




Project Notes:

- Developer willing to invest in storm water runoff plans to help alleviate drainage issues in this area
- Developer investing in landscaping

CONCEPTUAL PLAN

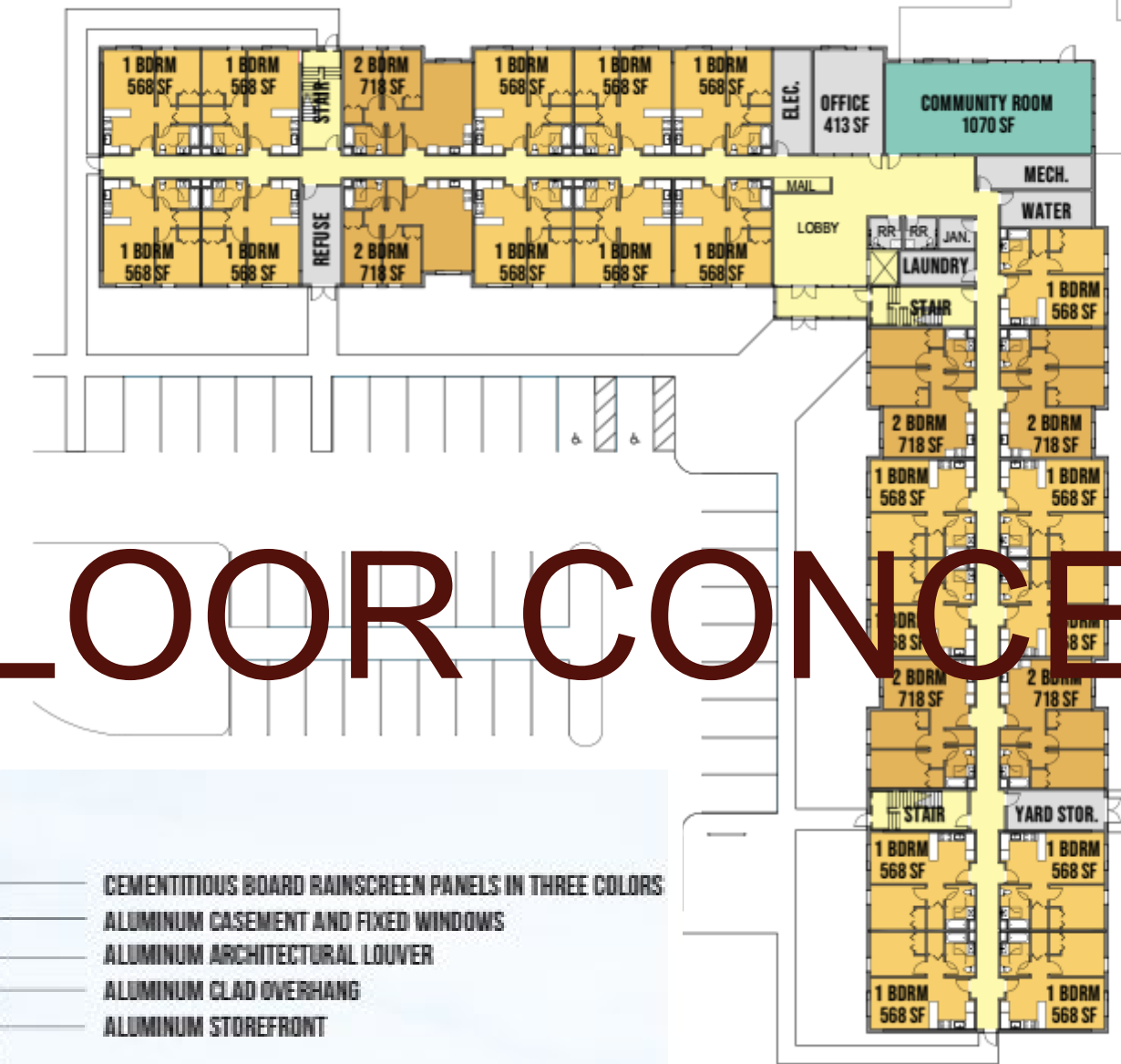


SCHUYLER POINTE

Project Notes:

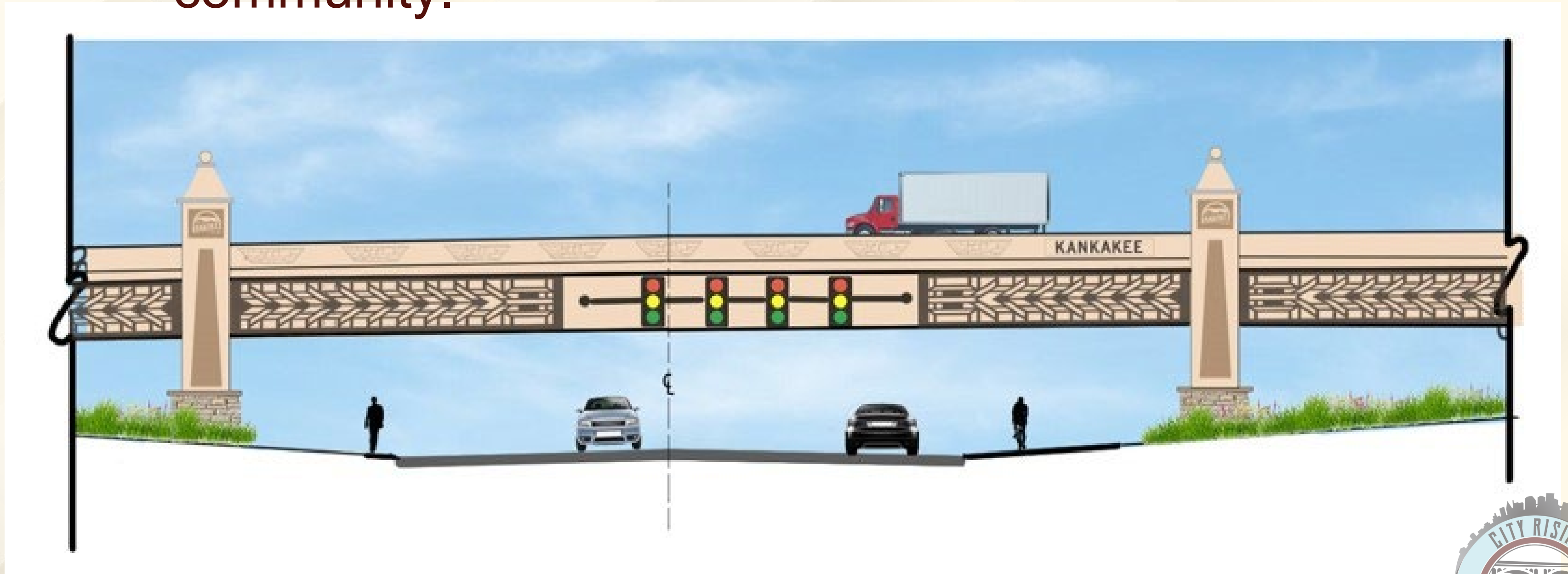
- LIHTC Project
- 50 units for 55+

1st FLOOR CONCEPT



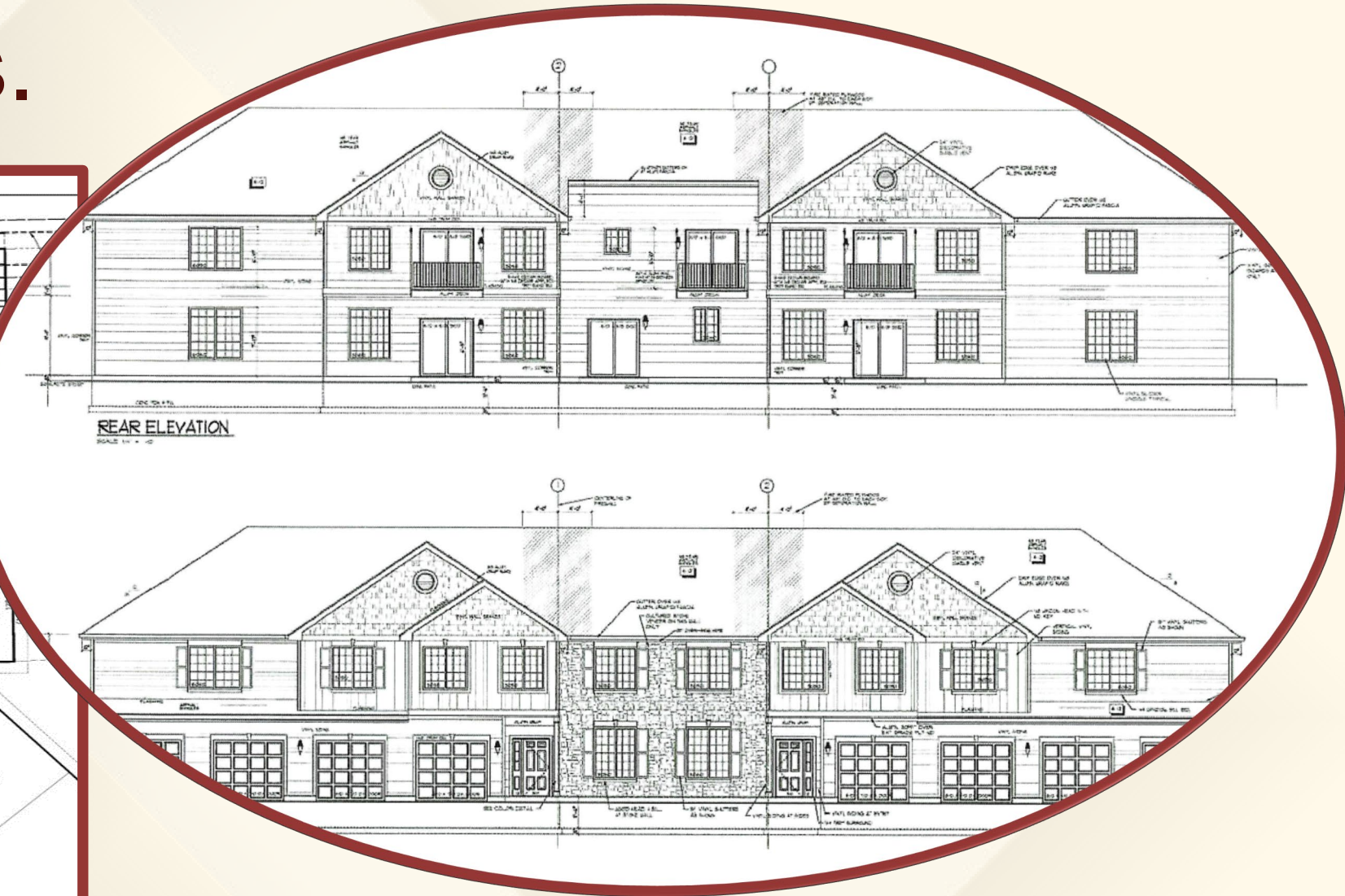
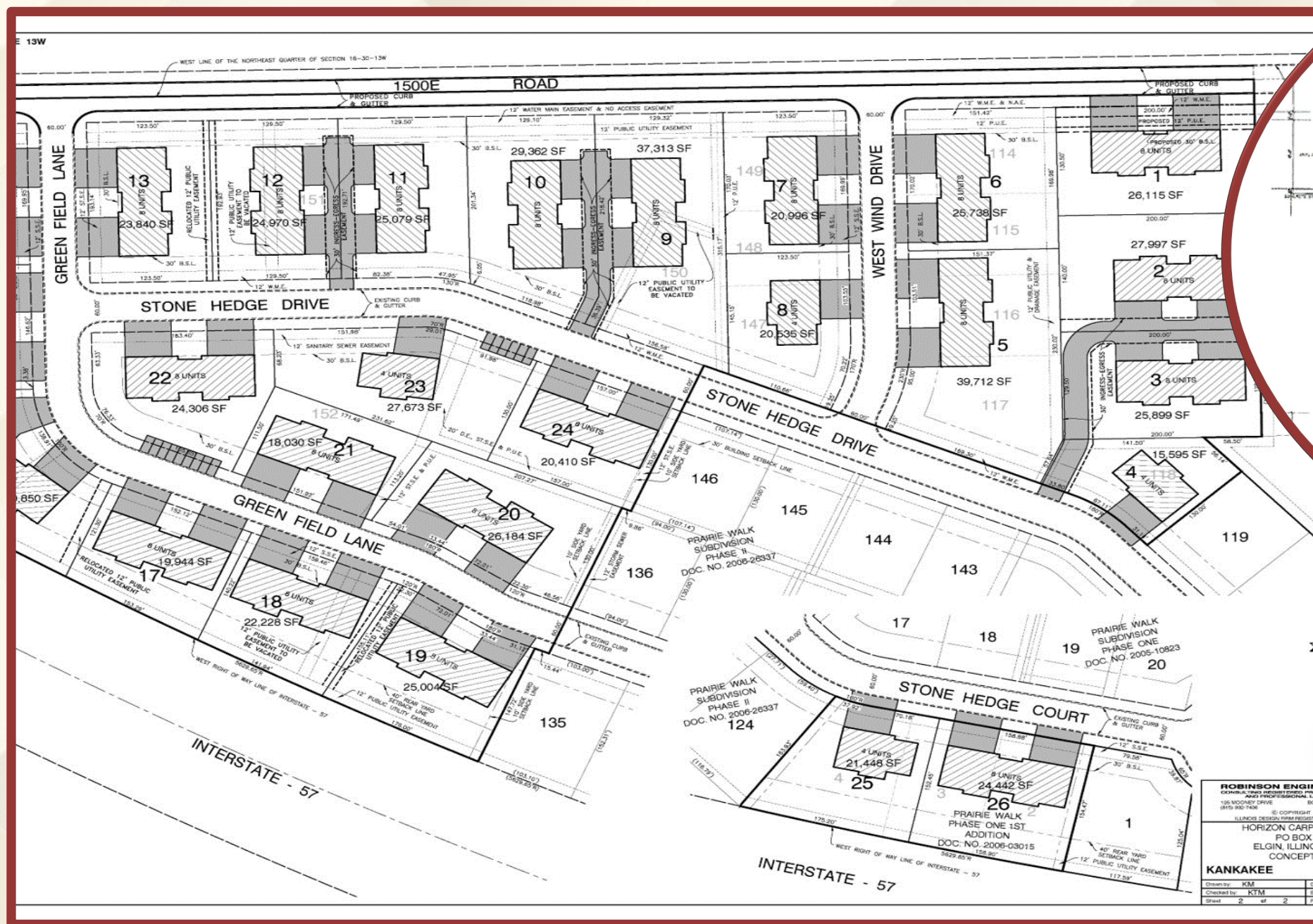
Project Notes:

- Working with IDOT to brand our interchanges during their construction to attract visitors to exit the highway and visit our community.



Project Notes:

- In negotiations with Prairie Walk developer to begin construction of single family and family units.



Housing Type
73 Single Family homes
29 Duplexes (58 units)
120 Townhomes (8 unit buildings)
Total: 251 units

