

KANKAKEE COUNTY TOP EMPLOYERS

GENERAL MAUNFACTURING



Armstrong World Industries	240
AAF Flanders	171
ITW Angleboard.....	160
J.R. Edwards Brushes and Rollers.....	130
Crown Beverage Company	125
IKO Midwest	125
Edmund Allen Lumber Company...	96
VanVoorst Lumber Company Inc...	89
Dayton Superior Corporation	75
Electron Beam Technologies Inc	61
Momence Pallet.....	38
Fibre Drum	36
Vulcan Materials Company.....	33
Greif Inc	25
Aamstrand Ropes and Twines.....	15
Ag Reliant Genetics	13

IRON,STEEL & METALS INDUSTRIES



Nucor Steel.....	500
Peddinghaus Corporation.....	274
Shoup Manufacturing	200
Stor-Loc.....	65
VanFab Inc	41
Arctic Snow and Ice Control.....	45
ABC Coating	40
Belson Steel Center and Scrap	41
Dabrico Inc.....	21

CHEMICALS MANUFACTURING



BASF	167
Sherwin Williams (formerly Valspar).150	
Dow Chemical Company	60
Sun Chemical	50
W.W. Henry Company LP	40

LIFE SCIENCES



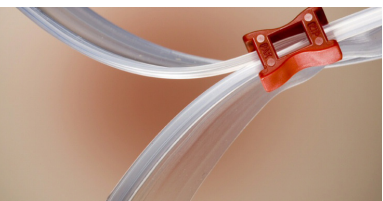
CSL Behring.....	1,700
MilliporeSigma	77

OTHER



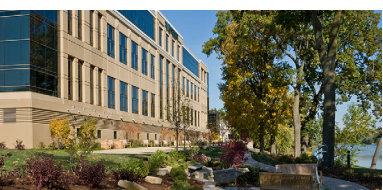
Olivet Nazarene University.....	623
Kankakee Community College.....	400
Kankakee Nursery	128
K.B. Cores.....	125
The Daily Journal.....	100
Aqua Illinois	100
Illinois Army National Guard.....	106
E2i Systems Engineering	47

PLASTICS MANUFACTURING



Pactiv Corporation.....	229
ITW Zip-Pak	45
Ring Container Technologies	30

HEALTH CARE



Riverside Healthcare	3,178
Cigna Healthcare.....	1,200
Shapiro Developmental Center.....	1,150
AMITA Healthcare.....	1,069
Illinois Veteran's Home	341
Indian Oaks Academy	340
OAK Orthopedics	115

FOOD PROCESSING



Van Drunen Farms.....	766
Del Monte Fresh Produce Company	312
Johnsonville	300
Urban Farmer LLC.....	200
Silva International	171
Gilster Mary-Lee Corporation.....	110
Bunge Milling	85
Plochman Inc.....	85
Dawn Food Products Inc.....	81
FutureCeuticals	75
J.R. Short Milling Company	75
Heartland Harvest	20

TRANSPORTATION / DISTRIBUTION / LOGISTICS



Baker and Taylor	540
A.N. Webber Inc.....	300
DHL.....	152
XPO Logistics.....	141
Vision Logistics	105
Hoekstra Transportation.....	115
Pepsi Beverages Company	64
Fedex Freight	30
Swift Transportation	25
Spikeball.....	10

HOSPITALITY & RECREATION



Dairy Queen	139
Kankakee Valley Park District	93
BrickStone Brewpub.....	87
Bourbonnais Township Park District ..	75
Monical Pizza Corporation.....	56
Hilton Garden Inn	40
Tivoli Ent., Inc./Classic Cinemas.....	27
BrickStone Production.....	14

TRANSPORTATION & INFRASTRUCTURE

FIBER: Dark fiber is accessible from multiple carriers.
WATER: Aqua Illinois systemwide capacity totals 30 MGD.
INTERSTATE ACCESS: Sixa I-57 Exits including new Bourbonnais Parkway interchange at Exit 318

AIR: Greater Kankakee Airport is the Chicago Southland's largest regional airport, with the longest runway outside of Midway International, at 5,981 feet. As of 2017, GKA is also home to a state-of-the-art, \$65 million Illinois Army National Guard Readiness Center and Army Aviation Support Facility.

Kankakee County is in close proximity to Midway Airport, which is drivable in 50 minutes and accessible by River Valley Metro shuttle service, and O'Hare International Airport, drivable in 60 minutes.



PUBLIC TRANSIT

- Amtrak
- River Valley Metro bus service
- Zagster bike share
- Showbus rural bus service

CLASS 1 RAIL

- Canadian National
- Norfolk Southern
- Union Pacific

INCENTIVES

BASED ON LOCATION, PROJECTS MAY BE ELIGIBLE TO PURSUE ONE OR MORE OF THE FOLLOWING:

- New Markets Tax Credits
- Historic Tax Credits
- Special Service Area or Business District benefits
- Opportunity Zone Financing
- C-PACE Financing
- Film Tax Credits and related incentives
- Tax Increment Financing

ENTERPRISE ZONE PROGRAM

In Kankakee County, enterprise zones provide valuable tools that enable business to invest, grow and hire. Together, our community's two enterprise zones have seen the addition of nearly 6,500 jobs, as well as more than \$1 billion in capital investment in more than 250 projects.

INCENTIVES FOR QUALIFYING PROJECTS:

- 5-year property tax abatement
- Sales tax exemption on building materials
- Free/discounted building permits
- Investment tax credit
- Machinery/equipment sales tax exemption
- Utility tax exemption



815.935.1177 kankakeecountyed.org



For available property information or custom data drill-downs for local workforce readiness, wages, demographics, consumer trends, cost of doing business, cost of living, recent expansions and development incentives, please contact the Alliance office.

Area Development magazine currently ranks the Kankakee MSA #1 in the Midwest among 399 metros nationwide for 5-year growth in employment and earnings.

2020 MARKET PROFILE

KANKAKEE COUNTY, ILLINOIS



#1 IN THE MIDWEST 5-YEAR GROWTH



Leading Metro Locations index Q4 2019

Bold indicates headquarters location.

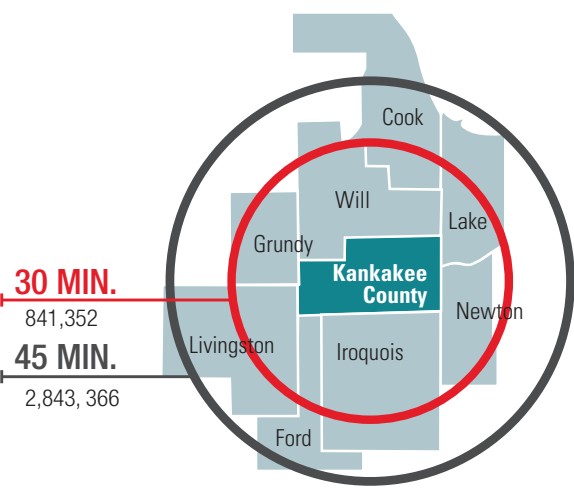
LABOR FORCE & JOBS

TOP SECTOR GROWTH SNAPSHOT

INDUSTRY	RANK	% GROWTH	NET NEW JOBS
Health Services & Private Education	1.....	8.90%	800
Manufacturing	15.....	5.90%	400
Information	25	0	0
Trade Transportation and Utilities	111	1%	100
TOTAL EMPLOYMENT: 47,300		0.90%	400

*Among 281 small metros. Source Headlight Data Dec. 2019

LABOR FORCE DRIVE TIMES



Source: U.S. Census Bureau, OnTheMap application and LEHD Origin-Destination Employment Statistics (Beginning of Quarter Employment, 2nd Quarter of 2002-2017).



STEM OCCUPATION GROWTH 2015 - 2020

OCCUPATION	2015 JOBS	2020 JOBS	% CHANGE	ANNUAL OPENINGS
Registered Nurses	1,363	1,575	16%	126
Life, Physical, & Social Science Occupation.....	366	540	48%	97
Inspectors, Testers, Etc.....	344	487	42%	90
Industrial Machinery Mechanics	193.....	285	48%	44
Management Analysts	98	148	51%	26
Computer User Support Specialists.....	113	157	24%	17
Mechanical Engineers.....	20	40	100%	7
Computer Network Support Specialists.....	18.....	31.....	72%	5

LEADING LOCAL INDICATORS

#1 IN ILLINOIS
SMALL METRO FOR JOB & TECH GROWTH
2013, 2014, 2016 - 2019



MILKEN INSTITUTE

2 BILLION+
2014-2019 MAJOR CAPITAL INVESTMENT

93% C2ER | **THE COUNCIL FOR COMMUNITY AND ECONOMIC RESEARCH**
OF U.S. AVERAGE COST OF LIVING INDEX

#6 IN USA
COST OF DOING BUSINESS



LODGING EXPANSION 2017 - 2020



New Hotel Square Footage..... 115,000 SF
Number of Rooms Added..... 189
TOTAL
Square Footage560,000 SF
Number of Rooms988



EDUCATION & TRAINING

OLIVET NAZARENE UNIVERSITY

With more than 140 fields of study and enrollment of nearly 5,000, ONU is ranked as one of the Best Colleges for 2019 by *U.S. News & World Report*. This is the Bourbonnais university's 14th consecutive year for inclusion on this prestigious list.

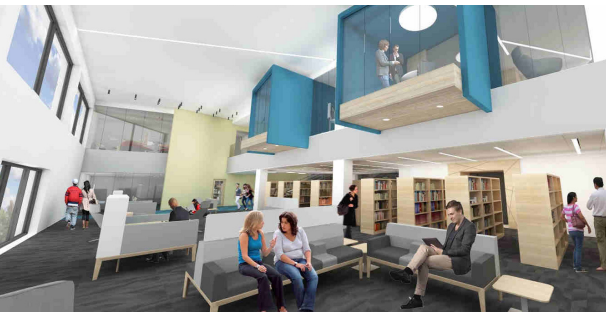


ONU's ABET-accredited Martin D. Walker School of Engineering has seen strong growth over the last decade, now offering nine concentrations, including Architectural, Chemical, Civil, Computer, Electrical, Mechanical engineering. New for 2019-20: Data Science program and Cybersecurity Defense major.

KANKAKEE COMMUNITY COLLEGE

KCC has award-winning and accredited programs to train the workforce and prepare students to transfer to 4-year universities and complete bachelor's degrees.

The college builds its career programs with input from advisory committees made up of local business and industry. As a direct result, the Industrial Machinery Registered Apprenticeship program began in 2018. Similarly, the electrical engineering technology program prepares students for renewable energy careers including solar, wind and geothermal. The new Advanced Technology Education Center—a LEED Gold building—provides the training space.



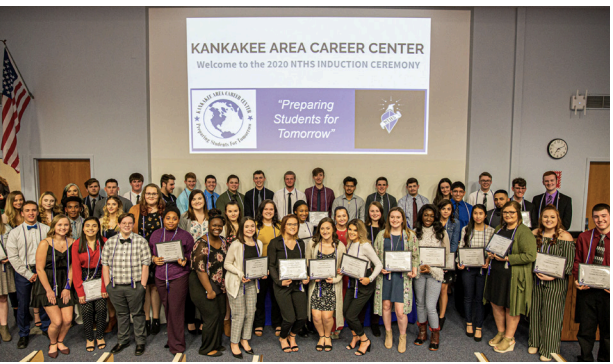
The Manufacturing and Industrial Technology Center gives students hands-on experience in sought-after skills: fabrication, machine tool, welding, millwright, and transportation/logistics.

KCC's health program graduates score above state and national averages for both employment and pass rates on certification and credential exams.

The Continuing Education, Career Services and Adult Education areas also meets the community's needs through custom training, personal enrichment, GED® preparation and other avenues.

KANKAKEE AREA CAREER CENTER

KACC aims to meet the vocational/technical education needs of the regional high school students. The underlying function of the career center is to prepare students to select viable career paths and to obtain the training and skills essential for continuing education and/or the job market.



GRUNDY LIVINGSTON KANKAKEE WORKFORCE BOARD

The GLKWB is responsible for investing \$2 million annually in support of local workforce training.

The organization secured and administers a \$216,332 Illinois Talent Pipeline Grant from the Illinois Department of Commerce & Economic Opportunity to upgrade the skillset of current employees in order to support expansion.

Over the past two years, GLKWB has supported local employers by providing nearly \$100,000 in training funds to assist employers in their upskilling efforts.



Regionally, the Workforce Board has supported projects in the transportation and manufacturing industries. Training funds were available to employers to upgrade the skills set of current employees. For example, ISO 9000 training was developed for area manufacturers and specialized auto mechanic training was developed for Ford dealers in the northeast region. GLKWB and partners semiannually host the Graduate & Get Paid Program to familiarize local high school students and staff with local career opportunities.

