

WELCOME

Board of Directors Update



JUNE 2022 PROGRAM REPORT

Board of Directors Update





MISSION

The Economic Alliance of Kankakee County is a public-private partnership that works to create jobs and expand the economic base by improving the local business climate in Kankakee County.

The Alliance employs a collaborative approach to support development in the strategic areas of business retention, expansion and attraction, and workforce and community development.





BOARD OF DIRECTORS

The Economic Alliance of Kankakee County Board of Directors is comprised of private-sector leaders and elected members of the Kankakee County Board.

Chairman Jeff Hammes, President / CEO, Peoples Bank
Vice Chair Michael Boyd, President, Kankakee Community College

Jeff Bennett, Managing Partner, McColly Bennett Real Estate
David Johns, Partner, Geoffrey, Johns & Associates
Melissa Kahoun, Environmental Compliance Manager, Aqua Illinois
Phil Kambic, President / CEO, Riverside Healthcare
Stephen Liehr, Kankakee County Board
Steve Magruder, IBEW retired
Pat Martin, Executive Vice Pres. /Community Pres., Iroquois Federal
Chad Miller, Kankakee County Board
Theodis Pace, President, Kankakee County NAACP
Samuel Payton, Kankakee County Board
Maureen Powell, Head of Communications, CSL Behring Kankakee
Christopher Shride, Regional President
Ascension Saint Joseph - Joliet
Ascension Saint Mary - Kankakee
Russell Tobey, Vice President, Kankakee Valley Construction Co.
Andrew Wheeler, Kankakee County Board



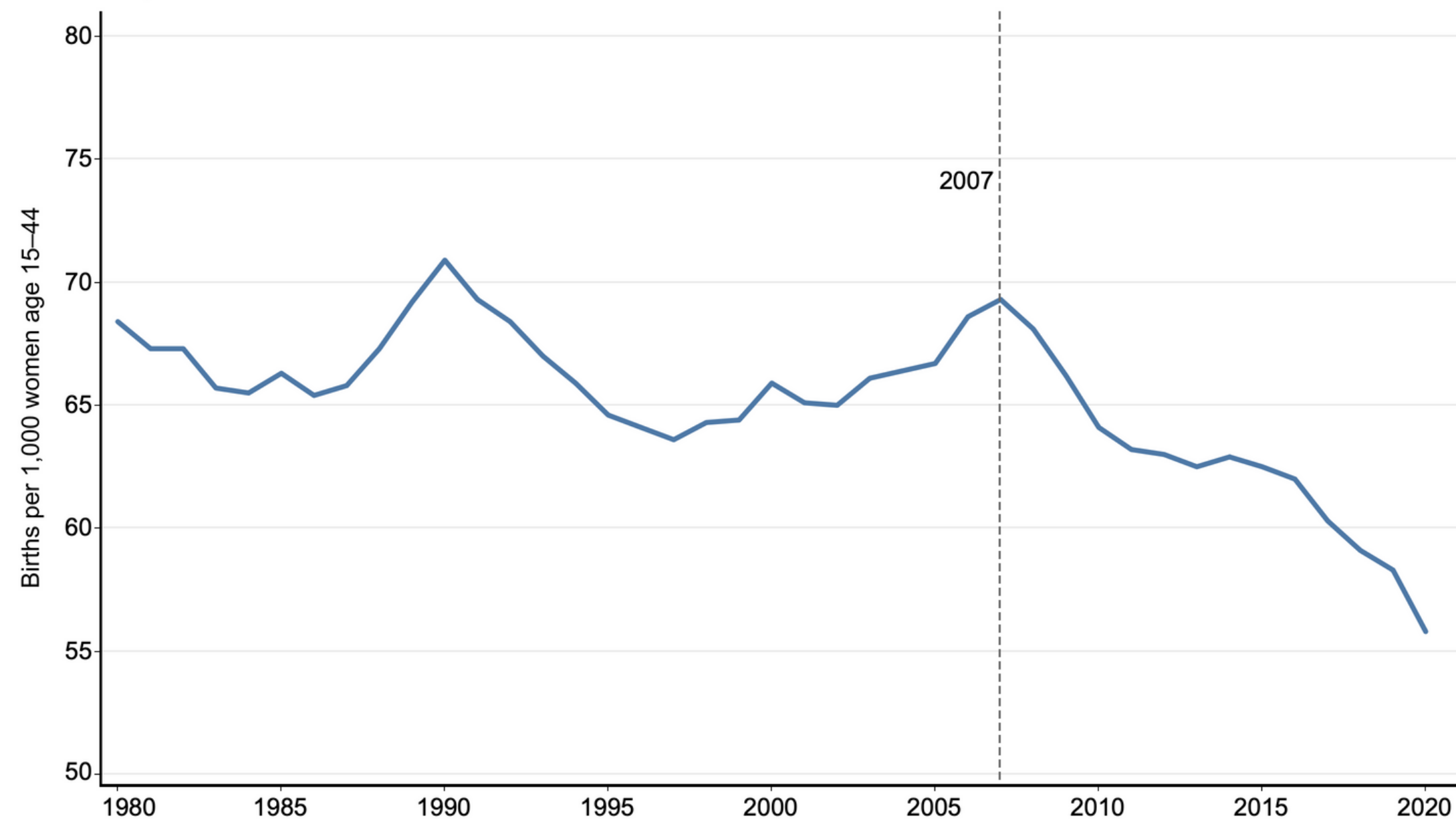
WORKFORCE



The Labor Crisis

TREND IN US BIRTH RATES

YEARLY, 1980–2020



Source: Centers for Disease Control

The U.S. birth rate has fallen by **20%** since 2007.



Available Workforce Kankakee County

2018: 48,100 in workforce

Today: 42,700 in workforce

5,400

**FEWER EMPLOYEES
IN WORKFORCE**



Unemployment

6.1%

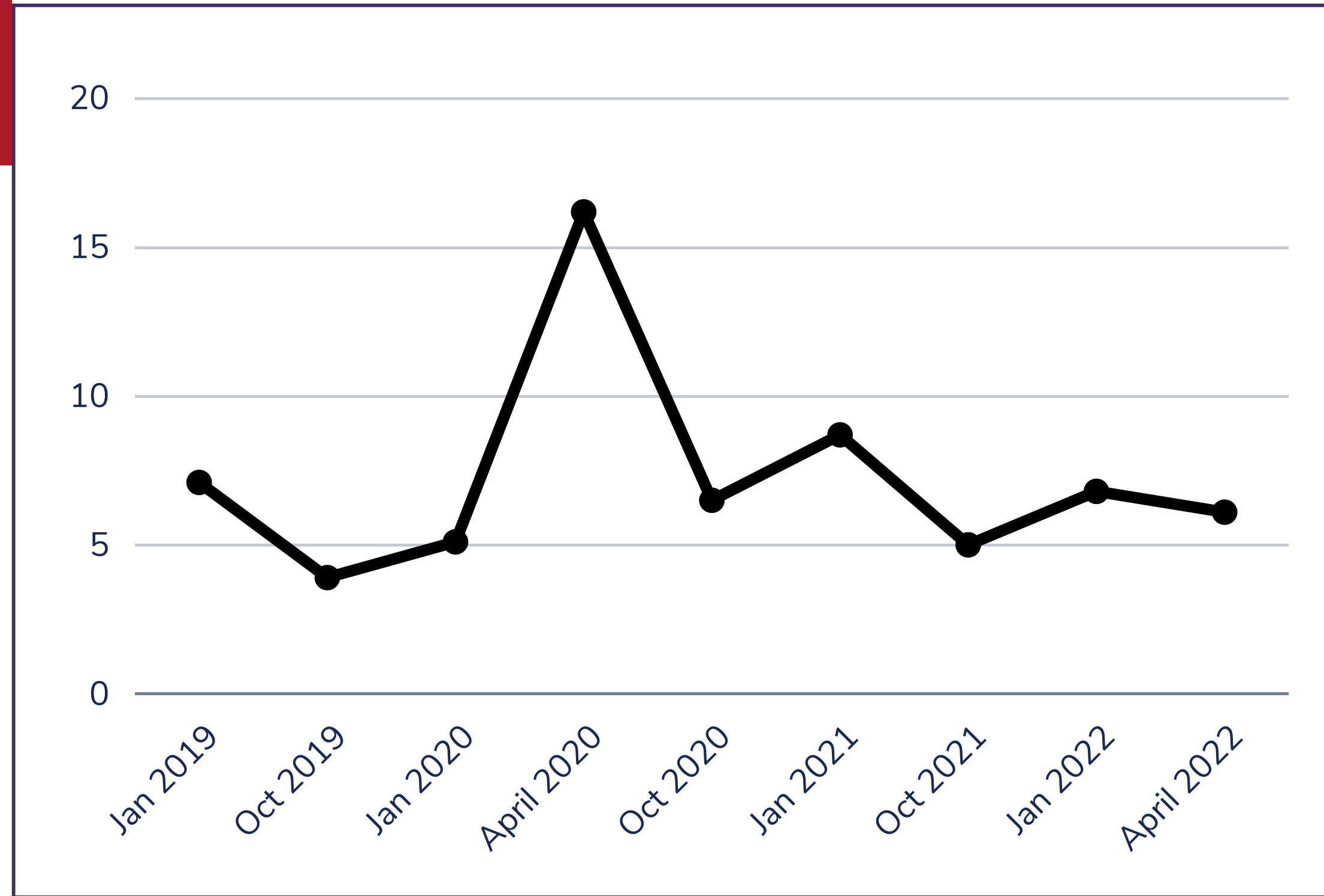
Kankakee County
unemployment
April 2022

4.6%

Illinois unemployment
April 2022

3.6%

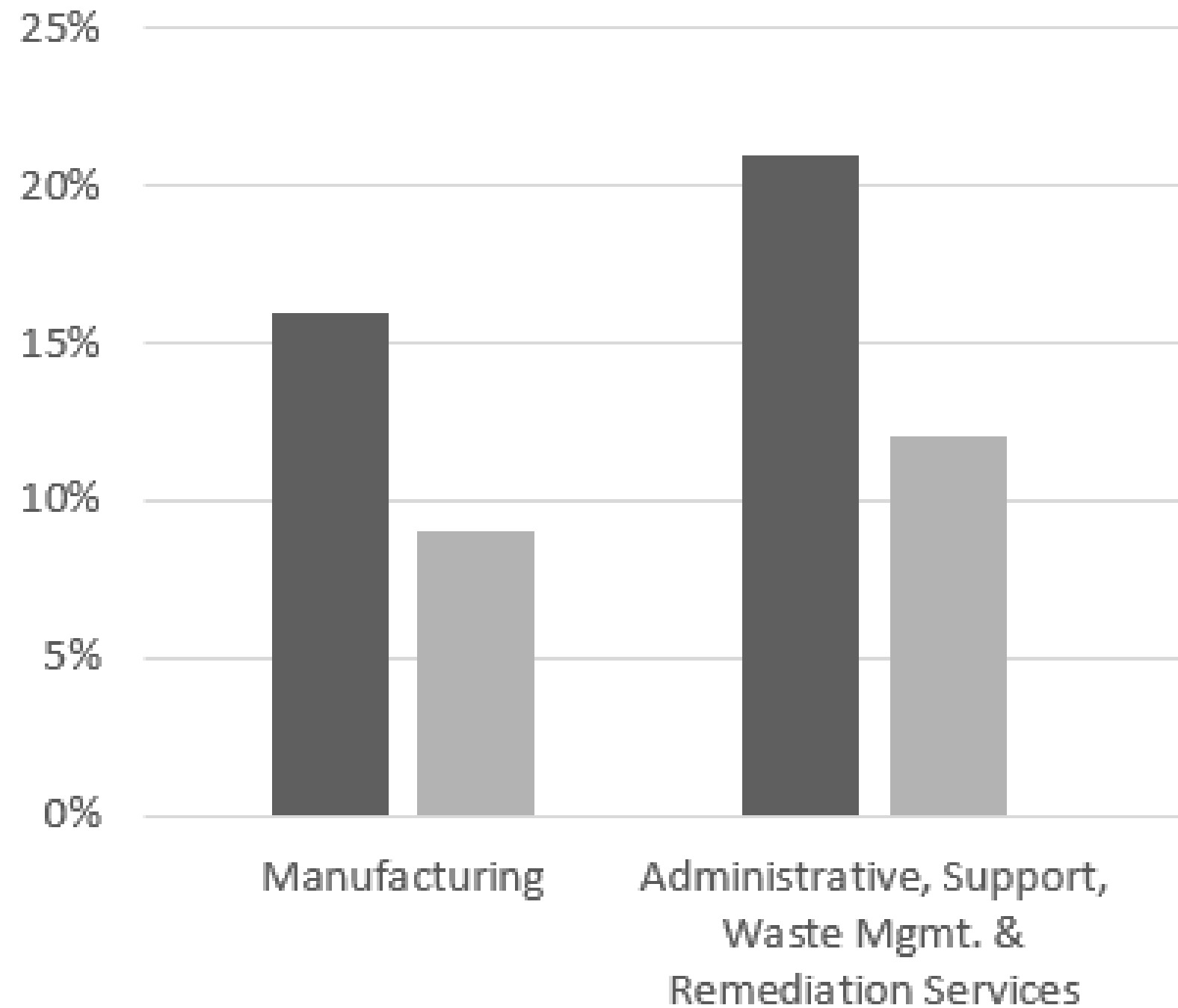
U.S. unemployment
April 2022



Kankakee County Unemployment Rate
Source: Illinois Department of Employment Security



Employment Opportunity Kankakee County



7%

More job openings in Manufacturing than in the U.S.

9%

More job openings in Administrative, Support & Waste Mgmt. than in the U.S.



Labor Force

JOB FAIR **Rep. Jackie Haas**

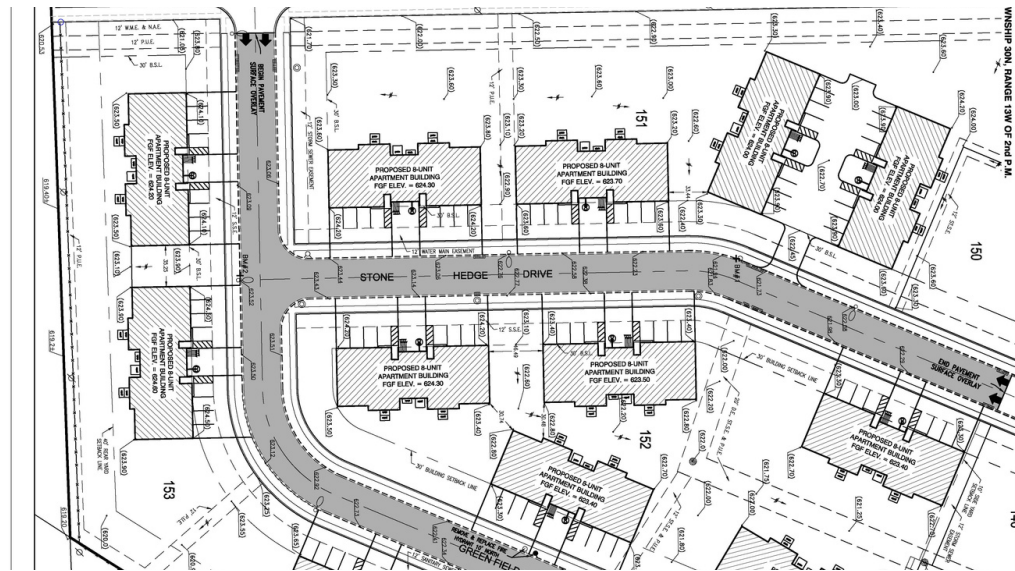
130 job seekers, 50 employers

Significant increase from
Fall, 2021 career fairs





LIVABILITY





85.2% of U.S.
Average

Housing: 70.0

Utilities: 95.4

Health Care: 99.1

Grocery Items: 89.4

Transportation: 105

Misc. Goods & Services: 88

Cost of Living



Residential Rebuild Initiative

Extending enterprise zone benefits to builders/homeowners to incentivize residential growth.

- Meetings with all Kankakee County Enterprise Zone stakeholders
- Maps currently being drafted for boundary-specific residential allotments

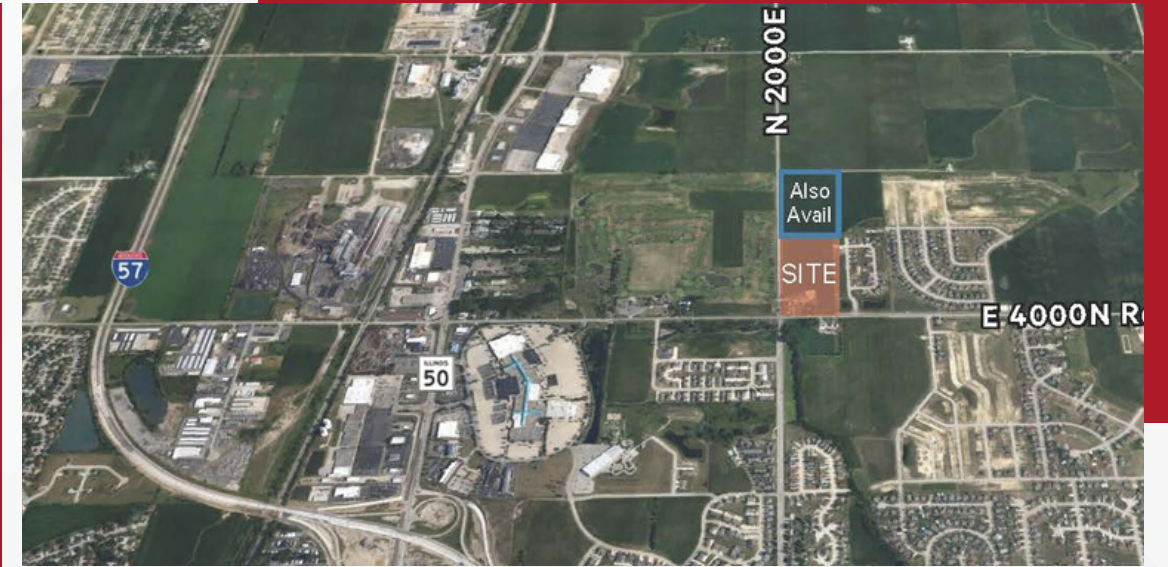
Next Steps:

- Ordinances drafted and voted on by each municipality
- Final approval for zone revisions by the Illinois Enterprise Zone Association





COMMUNITY DEVELOPMENT



Connecting Kankakee County



Pembroke Township Integrated Infrastructure Pilot

- \$3M as part of Congresswoman Robin Kelly's Community Project Funding requests.
- Broadband access to 850 residences, businesses, and community anchor institutions throughout Pembroke Township.



Connecting Kankakee County

Accelerate Illinois Broadband Infrastructure Planning Program

- 14-week community engagement program to map needs of broadband county-wide



Comcast adds 6.5 miles of fiber, advanced network infrastructure, totaling 700+ miles of network infrastructure in Kankakee County.

- Bradley Commons, Rte 50, Bourbonnais
- Water Tower Plaza, I-57/Rte 50, Bourbonnais
- Stanford Drive and Grinnell Road, Kankakee





Hotel Feasibility Study

- City of Kankakee
- Focus on Interstate-57 Exit 312 and the Downtown and Kankakee Riverfront districts
- Prompted by interests of local and outside businesses and developers

Hospitality



RETENTION & SUPPORT





- Produce cake, cookie, bread and biscuit mixes
- All of the breadings for Chic-fil-A
- Store brand names including Aldi, Great Value, IGA, Meijer
- 12 manufacturing plants, 3,000 employees company-wide
- Mومence location:
 - 130 employees, 20-30 openC positions
 - Hot cocoa mix; chocolate,C strawberry and caramel syrups



Business Retention



- Employee owned, located in Momence since 1940
- Flat boards, trim, siding, shingles and panels
- 30-40% of business is cedar
- 3-4 week turnaround





**BACK 2
BUSINESS**
SMALL BUSINESS RECOVERY GRANTS

\$250M in Covid Relief

Community Navigator partnership
with Chicago southside organizations





Kankakee County

\$2.46M locally

64 businesses awarded

Bourbonnais: \$675,000

Bradley: \$325,000

Grant Park: \$35,000

Kankakee: \$1.245M

Manteno: \$160,000

Momence: \$20,000



kankakeecountyed.org for appeals
or to check grant status



RISE Grant Application

Economic Recovery Plan for
Kankakee County



- Reengage and upskill workforce
- Increase focus on clean energy
- Address housing needs
- Expand broadband/utility infrastructure
- Focus opportunities to underserved populations



Illinois
Department of Commerce
& Economic Opportunity
OFFICE OF BUSINESS DEVELOPMENT
JB Pritzker, Governor



REGIONAL OUTREACH





Nicor Gas

Area Development Conference

- Site selection process for clients, economic development organizations
- State, local resources & incentives
- Utility partnerships & accessibility



2022 **DAILY JOURNAL**
Progress Awards





Kankakee Area Human Resource Managers Association



Regional Outreach

Mayor's Breakfast



KANKAKEE - IROQUOIS - FORD
ASSOCIATION OF REALTORS®



Kankakee County Democratic
Central Committee



Board and Committee Participation

United Way of Kankakee & Iroquois Counties

Kankakee County Convention & Visitors Bureau

Community Foundation of Kankakee River Valley

Healthy Business Alliance of Kankakee County

Pembroke Township & Village of Hopkins Park Utility Infrastructure Initiative

Kankakee Development Corporation

Venture Kankakee County

U.S. Rep. Robin Kelly's Economic Development Task Force

Grundy Livingston Kankakee Workforce Board Talent Outreach

Kankakee County Chamber of Commerce Legislative Committee

Illinois Industrial Biotechnology Coalition

Kankakee Area Human Resource Managers' Association marketing partner

Kankakee Community College Business/Office Professional Advisory Committee

Kankakee Community College Manufacturing Technology Advisory Committee

Kankakee Area Career Center Executive Advisory Committee

International Economic Development Council

Great Lakes Economic Development Council



2022 Market Profile



2022 MARKET PROFILE

ECONOMIC ALLIANCE
OF KANKAKEE COUNTY



KANKAKEE COUNTY, ILLINOIS

2022 Perfil de Mercado



2022 PERFIL DE MERCADO

ECONOMIC ALLIANCE
OF KANKAKEE COUNTY



CONNECT

2022 Board of Director Meetings

- September 8
- November 10

Tim Nugent tnugent@kankakeecountyed.org
President/CEO 815-482-1537

Ben Wilson bwilson@kankakeecountyed.org
Special Projects 815-228-6995

Angela Morrey amorrey@kankakeecountyed.org
Director 630-800-0006
Marketing & Business Attraction

200 E. Court St., Suite 507, Kankakee, IL 60901
815-935-1177 kankakeecountyed.org



THANK YOU

Board of Directors Update



 **ECONOMIC
ALLIANCE**

OF KANKAKEE COUNTY

kankakeecountyed.org