

WELCOME

Board of Directors Update



September 2022

PROGRAM REPORT





MISSION

The Economic Alliance of Kankakee County is a public-private partnership that works to create jobs and expand the economic base by improving the local business climate in Kankakee County.

The Alliance employs a collaborative approach to support development in the strategic areas of business retention, expansion and attraction, and workforce and community development.





BOARD OF DIRECTORS

The Economic Alliance of Kankakee County Board of Directors is comprised of private-sector leaders and elected members of the Kankakee County Board.

Chairman Jeff Hammes, President / CEO, Peoples Bank
Vice Chair Michael Boyd, President, Kankakee Community College

Jeff Bennett, Managing Partner, McColly Bennett Real Estate
David Johns, Partner, Geoffrey, Johns & Associates
Phil Kambic, President / CEO, Riverside Healthcare
Stephen Liehr, Kankakee County Board
Steve Magruder, IBEW retired
Pat Martin, Executive Vice Pres. /Community Pres., Iroquois Federal
Chad Miller, Kankakee County Board
Theodis Pace, President, Kankakee County NAACP
Maureen Powell, Head of Communications, CSL Behring Kankakee
Christopher Shride, Regional President
Ascension Saint Joseph - Joliet
Ascension Saint Mary - Kankakee
Russell Tobey, Vice President, Kankakee Valley Construction Co.
Andrew Wheeler, Kankakee County Board



ECONOMIC INDICATORS



2022 Kankakee County Rankings

#2

BEST SMALL
COMMUNITY FOR

LAW

ENFORCEMENT

#1

BEST SMALL
COMMUNITY FOR

CARPENTERS

#6

BEST SMALL
COMMUNITY FOR

NURSES

Based on salary, cost of living and job availability

*According to AdvisorSmith



2022 Rankings

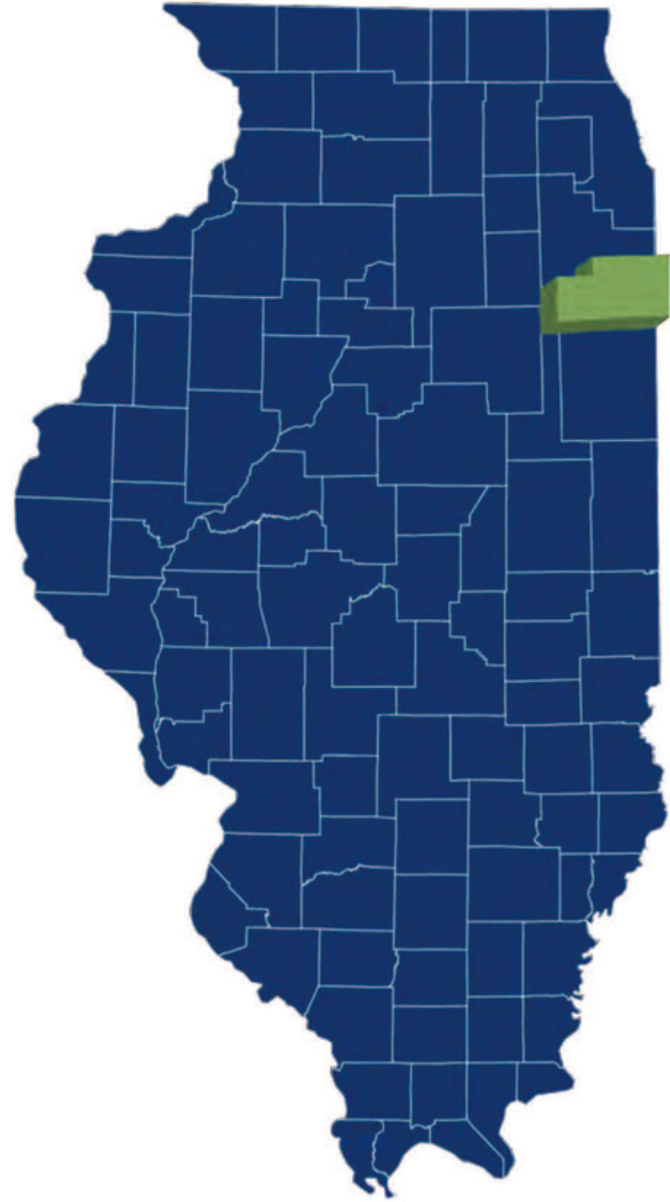
Manufacturing Hubs (SMALL MSAs)

- 1 COLUMBUS, IN
- 2 SHEBOYGAN, WI
- 3 LIMA, OH
- 4 DEERFIELD, IL
- 5 KANKAKEE, IL
- 6 OWENSBORO, KY
- 7 NAPA, CA
- 8 MORRISTOWN, TN
- 9 DALTON, GA
- 10 KOKOMO, IN

2022 Metro Rankings Report



Kankakee County



\$5.0 Billion
in Total Annual Economic Output

\$933.3 Million
in Salaries and Benefits

8,465
Total Jobs
(Direct & Indirect)

Top 3 Manufacturing Subsectors

- (1) Dehydrated Food Products Manufacturing
- (2) Biological Product (except Diagnostic) Manufacturing
- (3) Plastics Material and Resin Manufacturing



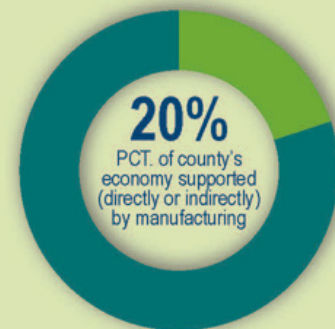
1.3

For every 10 jobs support directly by the manufacturing industry, another 3 jobs are created elsewhere in the county.



\$93,834

Avg. wage across all manufacturing jobs in the county



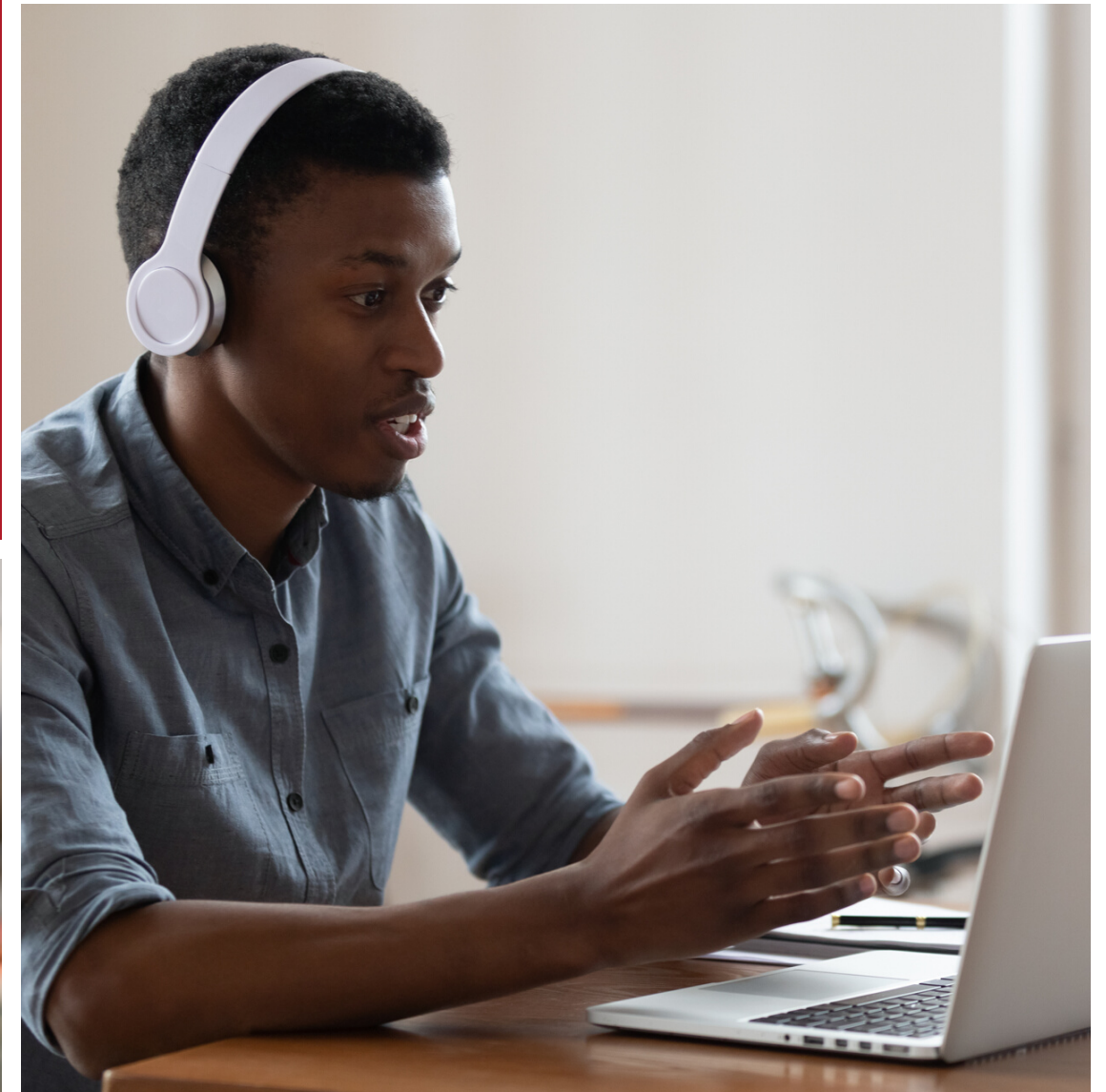
Manufacturing

Economic Analysis of the Manufacturing Sector in Illinois

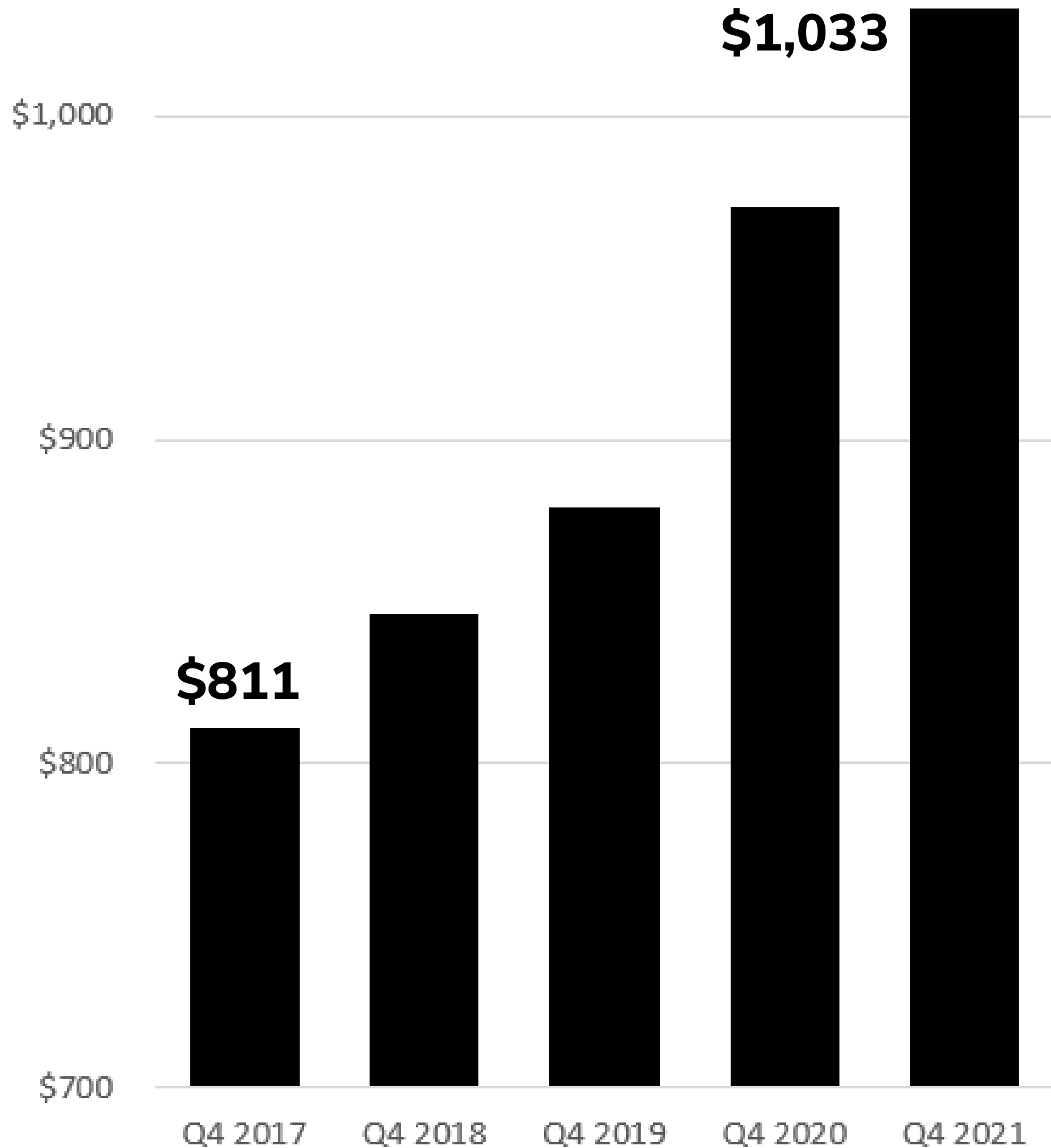




WORKFORCE



Average Weekly Wage Kankakee County

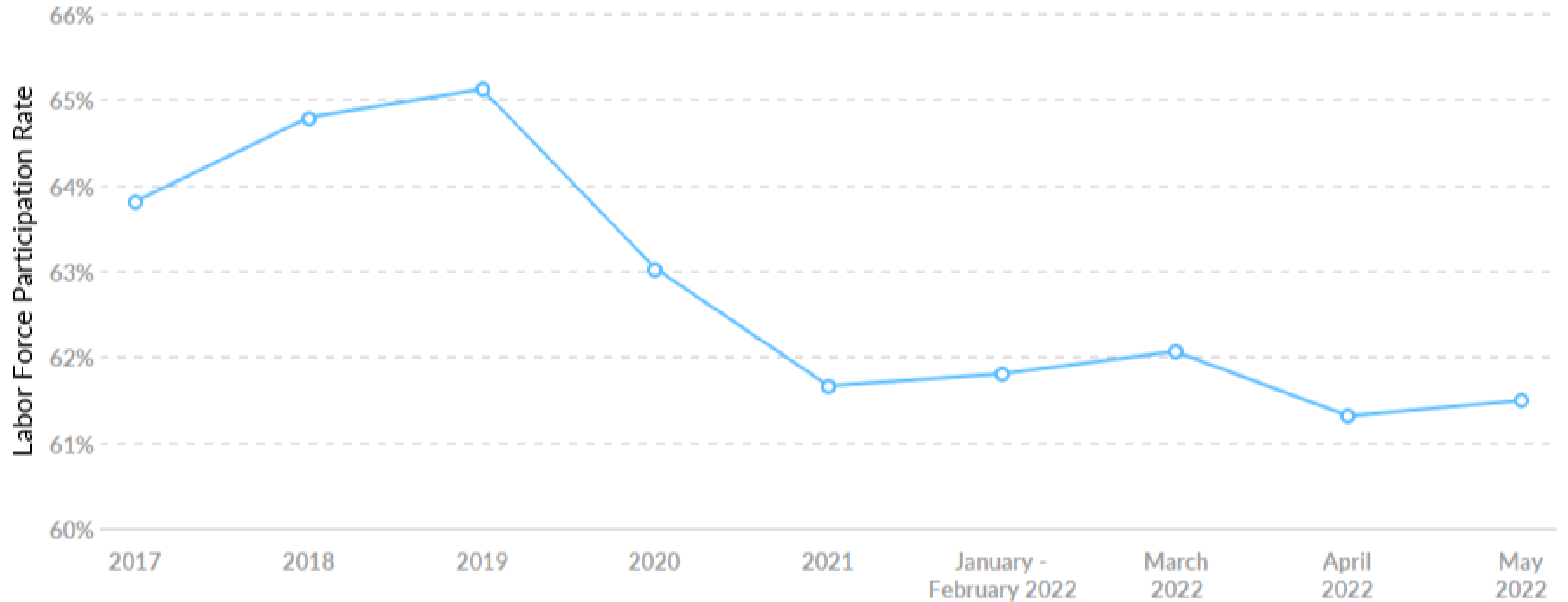


27%

Increase in five years



Labor Force Participation Rate Kankakee County



Unemployment

5.3%

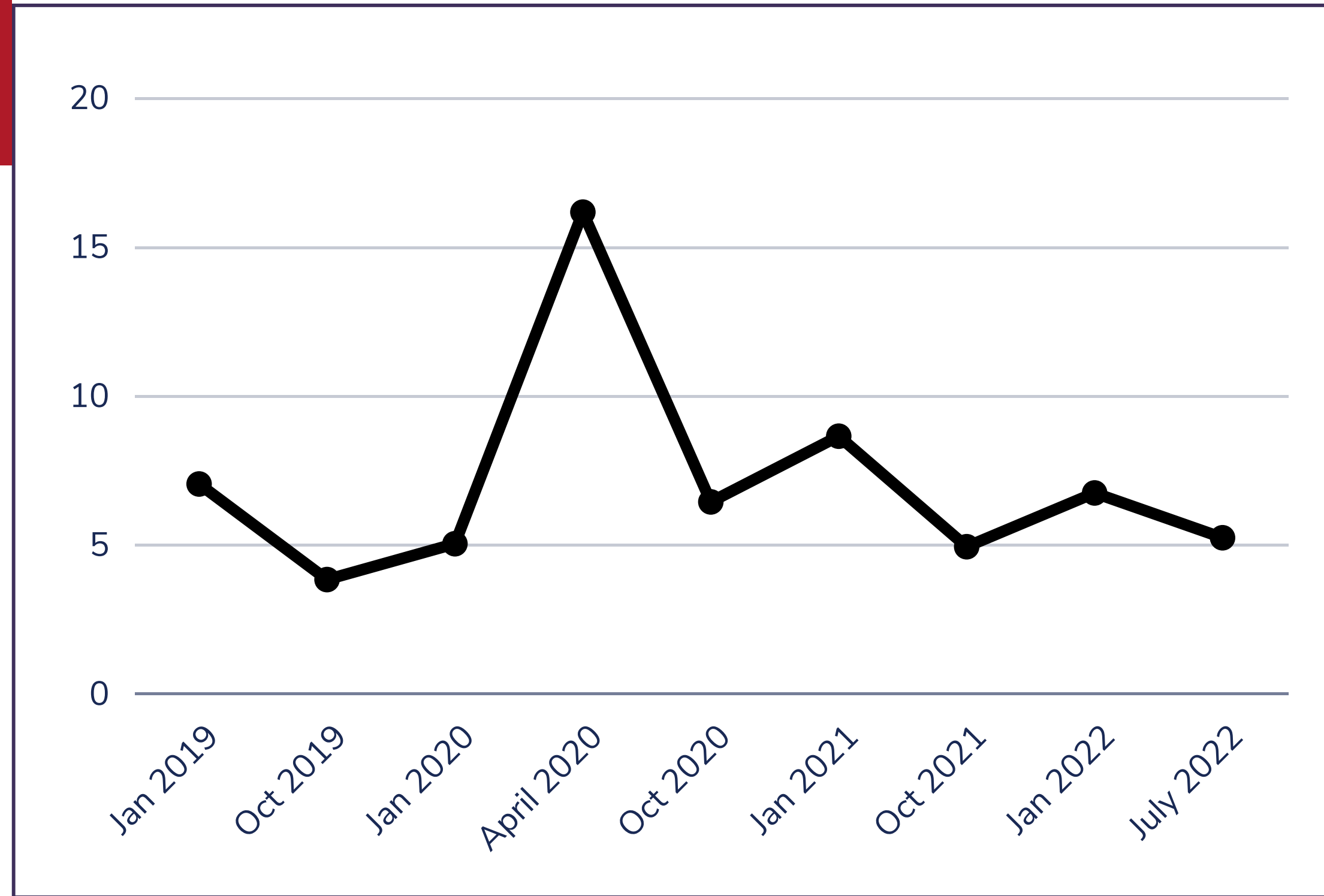
Kankakee County
unemployment
July 2022

4.4%

Illinois unemployment
July 2022

3.5%

U.S. unemployment
July 2022



Kankakee County Unemployment Rate
Source: Illinois Department of Employment Security



Unemployment

5.3%

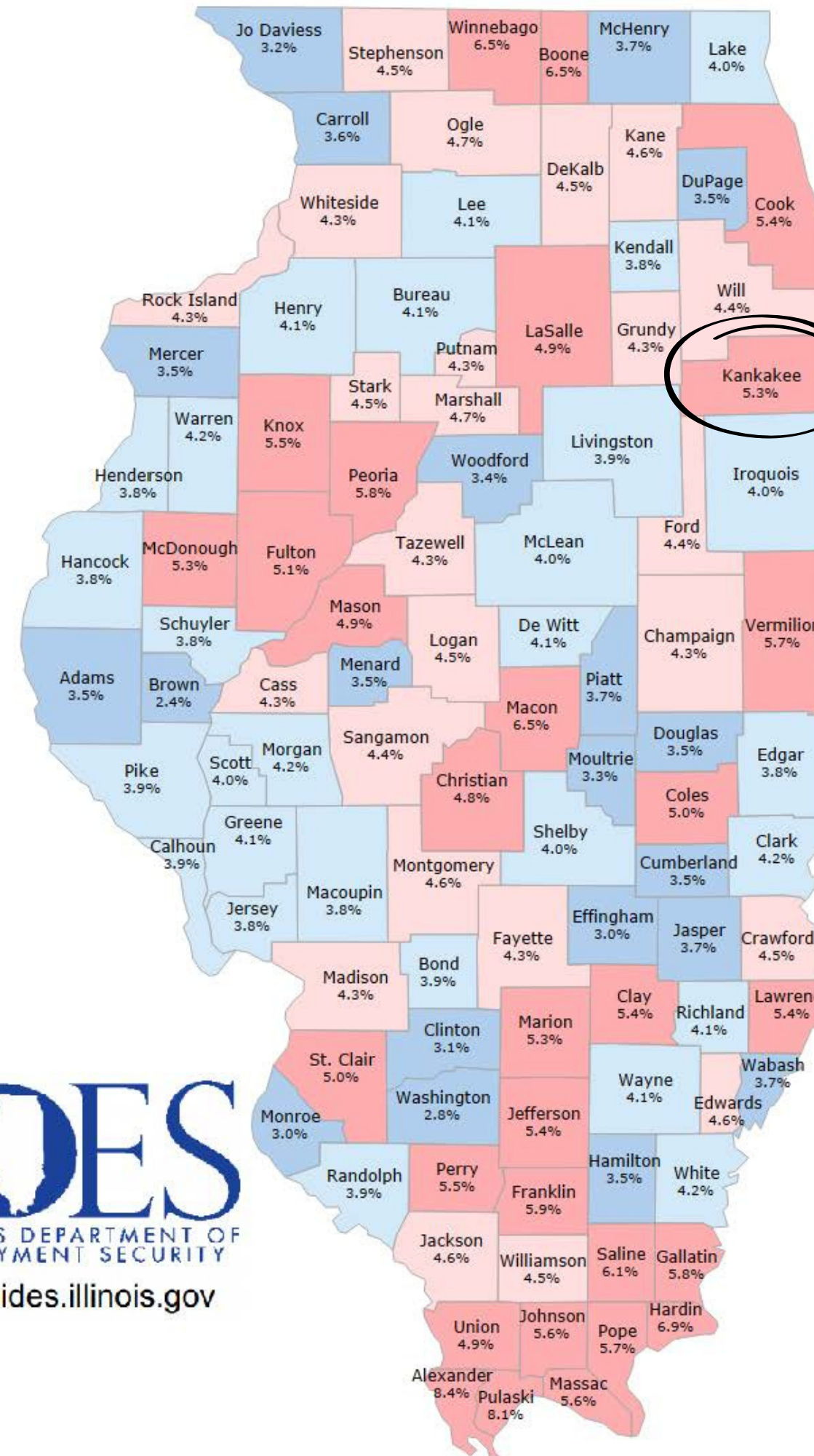
Kankakee County
unemployment
July 2022

4.4%

Illinois unemployment
July 2022

3.5%

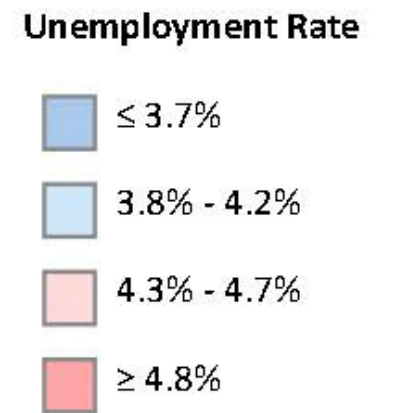
U.S. unemployment
July 2022



Unemployment Rates

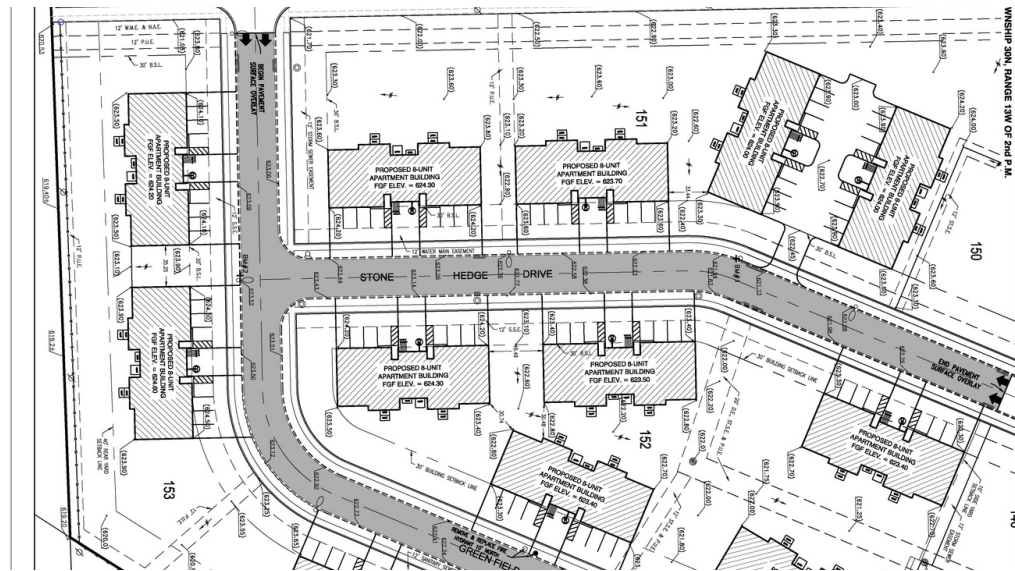
	Seasonally Adjusted	Not Seasonally Adjusted
U.S.	3.5%	3.8%
Illinois	4.4%	4.8%

IDES
ILLINOIS DEPARTMENT OF
EMPLOYMENT SECURITY
www.ides.illinois.gov





HOUSING & LIVABILITY





Housing Market Study

- ARPA funding approved by Kankakee County Board
- Tracy Cross - a market-industry leader in housing market studies will perform field work, data collection and analysis.
- Study will cover 681 square miles of Kankakee County
- Expected completion early 2023





Determine depth of residential market over the next 5-10 years

Explain the marketability of various forms of housing for Kankakee County

Offer specific design, pricing and rental rates that can be supported

Provide a geographic positioning study for new projects

Housing Market Study



Kankakee County Housing

Bourbonnais, Bradley, Kankakee, Kankakee County, Manteno, Momence

	August 2022	August 2021	% Change
Number of Listings Sold	207	255	-18.8%
Avg. Price of Sold Listings	\$224,889	\$192,131	+17%
Avg. DOM of Sold Listings	29.5	35	-15.7%
Number of Listings Available	402	315	+27.6%





Cost of Living

92.1% of U.S.
Average

Housing: 79.4

Utilities: 93.6

Health Care: 101.9

Grocery Items: 97.2

Transportation: 111.4

Misc. Goods & Services: 95.4

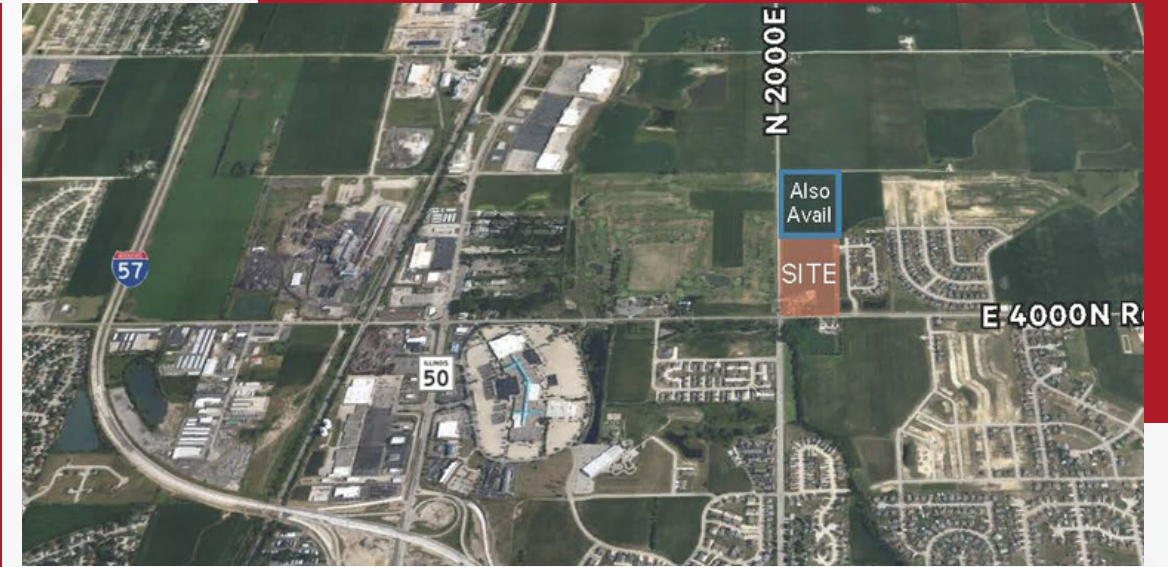
C2ER

THE COUNCIL FOR COMMUNITY
AND ECONOMIC RESEARCH

Q2, 2022 Data



COMMUNITY DEVELOPMENT



Bourbonnais

- \$3 million to Community Campus & Village Green development

Bradley

- \$3 million to Route 50 commercial corridor improvements



Main Street & Downtown Grant



- Main Street Renovations nearing completion
 - Parallel parking
 - 11 ft. sidewalk/curb space added
 - Over-the-street downtown gateways
- Fitness Court opened at Legacy Park
- Legacy Park concession stand completed, opened for football/soccer season



Downtown Manteno





Broadband Infrastructure

Accelerate Illinois Broadband Program

- 14-week community engagement training to establish county-wide broadband
- Researching vendors for project implementation



Illinois
Department of Commerce
& Economic Opportunity
OFFICE OF BUSINESS DEVELOPMENT
JB Pritzker, Governor





RETENTION & SUPPORT





Rep. Robin Kelly Retention Visits



- Cut and ship 340,000 lbs. fruit/week to midwest locations
- 175 employees in Kankakee location, now hiring



- Produce 4,500 tons/month in coated steel
- Producing steel for wind turbines
- 3rd largest location in central region for CMC, 6th largest company-wide
- 92 current employees



David Bradley Business Park





GREIF®

PACKAGING
SUCCESS
TOGETHER

- Produce tight head and open head NexDrums and 55-gallon blow molded drums
- Output 65,000 drums/month
- 44 team members, 24/7 operation
- Opened as Van Leer in 1986, purchased by Greif in 2001





- Packaging and paper products for the food processing industry
- Certified globally to make converted coated paper materials for direct contact with food
- 20 employees, now hiring





- First-ever hydraulic-controlled sectional wing snow plow
- Produced 1,800 plows last year, 2,000 expected in 2022
- Moved into David Bradley Business Park in 2004
- 60 employees





REGIONAL OUTREACH





Community Needs Assessment

Identify key local needs, create and strengthen local partnerships, target ARPA funding, assess local programs.

- Public Safety
- Workforce development
- Business and economic development
- Mental health
- Childcare and youth
- Housing
- OTHER (Addressed as results come in)



Kankakee Podcast



ANGELA MORREY

ECONOMIC ALLIANCE OF
KANKAKEE COUNTY



2022 / 2023
Coming Soon



THRIVE

KANKAKEE COUNTY, ILLINOIS | 2021-2022



Board and Committee Participation

United Way of Kankakee & Iroquois Counties

Kankakee County Convention & Visitors Bureau

Community Foundation of Kankakee River Valley

Healthy Business Alliance of Kankakee County

Pembroke Township & Village of Hopkins Park Utility Infrastructure Initiative

Kankakee County CEO program

Kankakee Development Corporation

Venture Kankakee County

U.S. Rep. Robin Kelly's Economic Development Task Force

Grundy Livingston Kankakee Workforce Board Talent Outreach

Kankakee County Chamber of Commerce Legislative Committee

Illinois Industrial Biotechnology Coalition

Kankakee Area Human Resource Managers' Association marketing partner

Kankakee Community College Business/Office Professional Advisory Committee

Kankakee Community College Manufacturing Technology Advisory Committee

Kankakee Area Career Center Executive Advisory Committee

International Economic Development Council

Great Lakes Economic Development Council



2022 MARKET PROFILE

 ECONOMIC ALLIANCE
OF KANKAKEE COUNTY



2022 PERFIL DE MERCADO

 ECONOMIC ALLIANCE
OF KANKAKEE COUNTY





JOIN US



NOVEMBER 10

Weber Center
Olivet Nazarene University

*7:00am - Breakfast
7:30am - Meeting Begins



Guest Speaker

Mark Denzler, President



*NOTE: EARLY START
REGISTRATION REQUIRED



Investment Appeal

2022 Program of Work

Funding

- 15% funded by Kankakee County
- 70% by Kankakee County Economic Development Assoc.
- Additional private investments
 - At 50% mark for 2022



 **ECONOMIC ALLIANCE**
OF KANKAKEE COUNTY

815.935.1177 kankakeecountyed.org

200 E. Court St., Suite 507, Kankakee, IL 60901

CONNECT

Tim Nugent
President/CEO

tnugent@kankakeecountyed.org
815-482-1537

Ben Wilson
Special Projects

bwilson@kankakeecountyed.org
815-228-6995

Angela Morrey
**Director, Marketing &
Business Attraction**

amorrey@kankakeecountyed.org
630-800-0006

200 E. Court St., Suite 507, Kankakee, IL 60901
815-935-1177 kankakeecountyed.org



THANK YOU

Board of Directors Update



 **ECONOMIC
ALLIANCE**

OF KANKAKEE COUNTY

kankakeecountyed.org